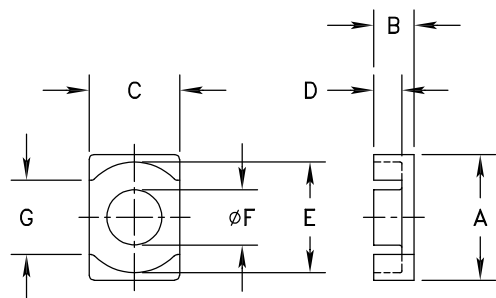


****Not all features are shown in this drawing.**
 For more detailed information, please contact
 your Fair-Rite representative.

SIZE	PART NO.	REV.
B	9561250802	~

UNCONTROLLED COPY WHEN PRINTED




ELECTRICAL SPECIFICATIONS						
$\Sigma l/A(\text{mm}^{-1})$	l_e (mm)	A_e (mm ²)	A_{Min} (mm ²)	V_e (mm ³)	A_L (nH) @10kHz <10gauss	Q @ 10MHz <1gauss
0.415	41.5	100	95	4150	275 Min.	> 50
MATE PAIR: CLAMPING FORCE = 10 lbs.						

A	B	C	D
24.60/25.40	7.90/8.10	17.65/18.35	5.00/5.30
.984	.315	.709	.203
E	F	G	
21.60/22.40	10.80/11.20	14.40 Min.	
.866	.433	.567 Min.	

BOLD DIMENSIONS ARE IN MILLIMETERS**, LIGHT DIMENSIONS ARE IN INCHES.

MATERIAL
 FR# 61

 FAIR-RITE PRODUCTS CORP.						
TITLE "EQ" CORE						
DRAWN BY J.CUSTY	DATE 11/07/22	SIZE	PART NO.	REV.		
CHKD BY		B	9561250802	~		
APPRVD BY		SCALE	NONE	SHEET 1 of 1		