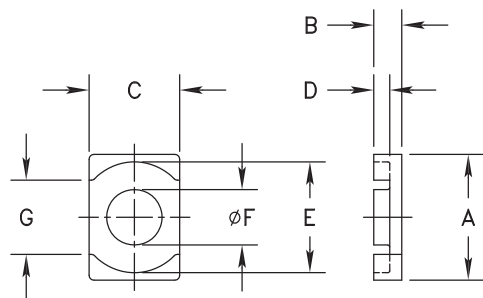


****Not all features are shown in this drawing.**
 For more detailed information, please contact
 your Fair-Rite representative.

UNCONTROLLED COPY WHEN PRINTED

SIZE	PART NO.	REV.
B	9561250602	~




ELECTRICAL SPECIFICATIONS						
$\Sigma l/A(\text{mm}^{-1})$	l_e (mm)	A_e (mm ²)	A_{Min} (mm ²)	V_e (mm ³)	A_L (nH) @10kHz <10gauss	Q @ 10MHz <1gauss
0.352	32.8	93.3	82.8	3060	325 Min.	> 50

A	B	C	D
24.60/25.40	5.50/5.70	17.65/18.35	3.05/3.35
.984	.220	.709	.126
E	F	G	
21.60/22.40	10.80/11.20	14.40 Min.	
.866	.433	.567 Min.	

BOLD DIMENSIONS ARE IN MILLIMETERS**, LIGHT DIMENSIONS ARE IN INCHES.

MATERIAL
 FR# 61

 FAIR-RITE PRODUCTS CORP.						
TITLE "EQ" CORE						
DRAWN BY J.CUSTY	DATE 11/04/22	SIZE B	PART NO. 9561250602			REV. ~
CHKD BY		APPRVD BY	SCALE NONE	SHEET 1 of 1		