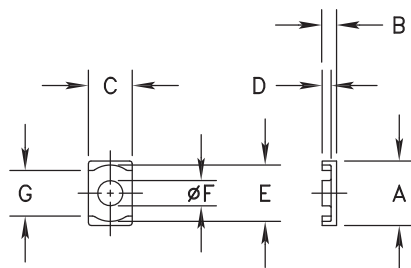


****Not all features are shown in this drawing.**
 For more detailed information, please contact
 your Fair-Rite representative.

SIZE	PART NO.	REV.
B	9561130302	~

UNCONTROLLED COPY WHEN PRINTED



ELECTRICAL SPECIFICATIONS						
$\Sigma l/A(\text{mm}^{-1})$	l_e (mm)	A_e (mm ²)	A_{Min} (mm ²)	V_e (mm ³)	A_L (nH) @10kHz <10gauss	Q @ 10MHz <1gauss
0.856	17.4	20.0	19.2	348	128 Min.	> 50

A	B	C	D
12.50/13.10	2.775/2.925	8.45/8.95	1.625/1.875
.504	.112	.343	.069
E	F	G	
10.90/11.50	4.85/5.15	8.75 Min.	
.441	.197	.345 Min.	

BOLD DIMENSIONS ARE IN MILLIMETERS**, LIGHT DIMENSIONS ARE IN INCHES.

MATERIAL
 FR# 61

FAIR-RITE PRODUCTS CORP.						
TITLE "EQ" CORE						
DRAWN BY J.CUSTY	DATE 11/04/22	SIZE	PART NO.			REV.
CHKD BY		B	9561130302			~
APPRVD BY		SCALE	NONE	SHEET 1 of 1		