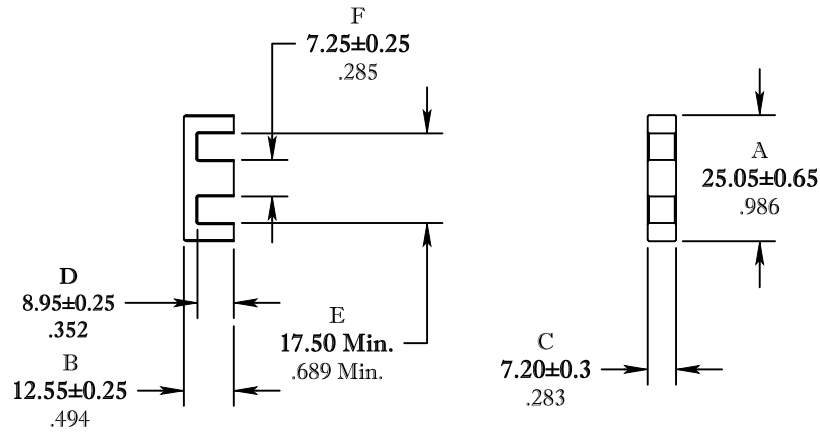


\*\* Not all features are shown in this drawing. For more detailed information, please contact your Fair-Rite representative.

UNCONTROLLED ~CATALOG~ DRAWING


SIZE	PART NO.	REV.
B	9478105002	~



DIMENSIONS  
**BOLD NUMBERS ARE IN MILLIMETERS**  
 LIGHT NUMBERS ARE IN INCHES

ELECTRICAL SPECIFICATIONS				
$\Sigma l/A(\text{mm}^{-1})$	$l_e$ (mm)	$A_e$ (mm <sup>2</sup> )	$V_e$ (mm <sup>3</sup> )	$A_L$ (nH) @1kHz <10gauss
1.14	57.9	50.9	2950	1800±25%
MATE PAIR CLAMPING FORCE = 5 lbs				

POWER LOSS @ 100°C  
 f = 100kHz, 2000g P.L. < 1.65 Watts

 <b>FAIR-RITE PRODUCTS CORP.</b>				
TITLE				
E CORE				
DRAWN BY J.SERENCIS	DATE 07-16-2018	SIZE	PART NO.	REV.
CHKD BY		B	9478105002	~
APPRVD BY		SCALE	NONE	SHEET 1 of 1

FR# 78