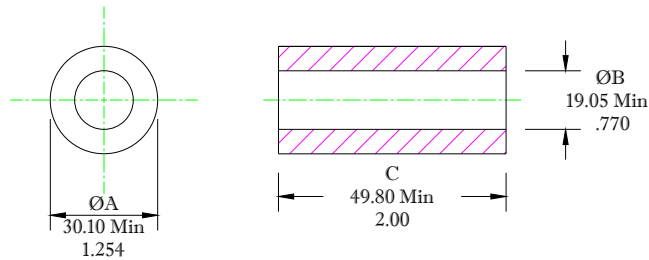


\*\* Not all features are shown in this drawing. For more detailed information, please contact your Fair-Rite representative.

UNCONTROLLED ~CATALOG~ DRAWING

SIZE	PART NO.	REV.
B	2675103002	~




DIMENSIONS  
**BOLD DIMENSIONS ARE IN MILLIMETERS**  
 LIGHT DIMENSIONS ARE IN INCHES.

NOTES:

1 - BURNISH TO BREAK SHARP EDGES.

ELECTRICAL SPECIFICATIONS							
$\Sigma l/A(\text{mm}^{-2})$	$l_c$ (mm)	$A_c$ (mm <sup>2</sup> )	$V_c$ (mm <sup>3</sup> )	$L_c$ (nH)	IMPEDANCE (OHMS)		
					500 kHz	1 MHz	5 MHz
0.2536	77.6	300	23,770	4.955	TBD Min.	TBD Min.	TBD Min.
N=1 #22AWG WL=5.00"							

 <b>FAIR-RITE PRODUCTS CORP.</b>							
TITLE EMI SUPPRESSION CORE							
DRAWN BY A. BARTLETT	DATE 05-10-23	SIZE B	PART NO. 2675103002			REV. ~	
CHKD BY							
APPRVD BY		SCALE NONE	SHEET 1 of 1				

FR# 75