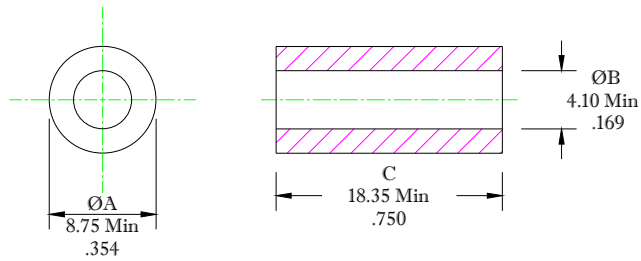


\*\* Not all features are shown in this drawing. For more detailed information, please contact your Fair-Rite representative.

UNCONTROLLED ~CATALOG~ DRAWING

SIZE	PART NO.	REV.
B	2643302502	~




DIMENSIONS  
**BOLD DIMENSIONS ARE IN MILLIMETERS**  
 LIGHT DIMENSIONS ARE IN INCHES.

NOTES:

1 - BURNISH TO BREAK SHARP EDGES.

ELECTRICAL SPECIFICATIONS						
$\Sigma l/A(\text{mm}^{-2})$	$l_c$ (mm)	$A_c$ (mm <sup>2</sup> )	$V_c$ (mm)	$L_c$ (nH)	IMPEDANCE (OHMS)	
					25 MHz	100 MHz
0.4461	19.1	42.8	816	2.817	84 Min.	122 Min.
N=1 #22AWG WL=2"						

 <b>FAIR-RITE PRODUCTS CORP.</b>						
TITLE EMI SUPPRESSION CORE						
DRAWN BY A. BARTLETT	DATE 12-07-22	SIZE B	PART NO. 2643302502	REV. ~		
CHKD BY		APPRVD BY	SCALE NONE	SHEET 1 of 1		

FR# 43