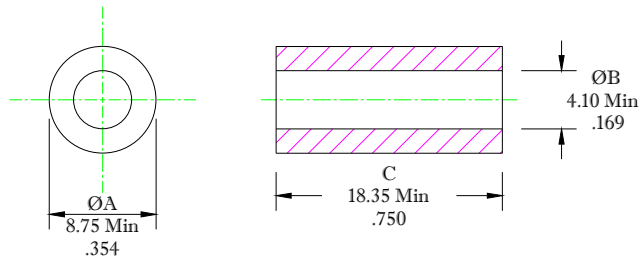


** Not all features are shown in this drawing. For more detailed information, please contact your Fair-Rite representative.

UNCONTROLLED ~CATALOG~ DRAWING

SIZE	PART NO.	REV.
B	2631302502	~



DIMENSIONS
BOLD DIMENSIONS ARE IN MILLIMETERS
 LIGHT DIMENSIONS ARE IN INCHES.

ELECTRICAL SPECIFICATIONS							
$\Sigma l/A(\text{mm}^{-2})$	l_c (mm)	A_c (mm ²)	V_c (mm)	L_c (nH)	IMPEDANCE (OHMS)		
					10 MHz	25 MHz	100 MHz
0.4461	19.1	42.8	816	2.817	60 Min.	89 Min.	139 Min.
N=1 #22AWG WL=2"							

NOTES:

1 - BURNISH TO BREAK SHARP EDGES.

FR# 31

FAIR-RITE PRODUCTS CORP.					
TITLE EMI SUPPRESSION CORE					
DRAWN BY A. BARTLETT	DATE 12-07-22	SIZE B	PART NO. 2631302502	REV. ~	
CHKD BY		APPRVD BY	SCALE NONE	SHEET 1 of 1	