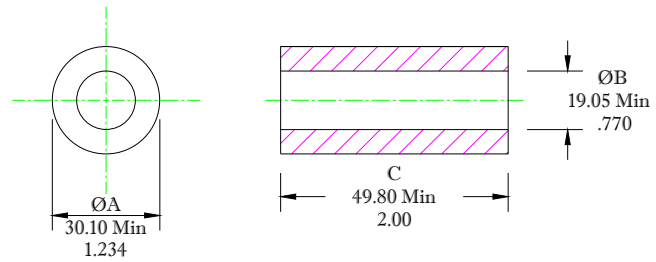


** Not all features are shown in this drawing. For more detailed information, please contact your Fair-Rite representative.

UNCONTROLLED ~CATALOG~ DRAWING

SIZE	PART NO.	REV.
B	2675103002	~



DIMENSIONS
BOLD DIMENSIONS ARE IN MILLIMETERS
 LIGHT DIMENSIONS ARE IN INCHES.

ELECTRICAL SPECIFICATIONS							
$\Sigma l/A(\text{mm}^{-2})$	l_c (mm)	A_c (mm ²)	V_c (mm)	L_c (nH)	IMPEDANCE (OHMS)		
					500 kHz	1 MHz	5 MHz
0.2536	77.6	300	23,770	4.955	74 Min.	90 Min.	40 Min.
N=1 #22AWG WL=5.00"							

NOTES:

1 - BURNISH TO BREAK SHARP EDGES.

FR# 75

FAIR-RITE PRODUCTS CORP.							
TITLE EMI SUPPRESSION CORE							
DRAWN BY A. BARTLETT	DATE 05-10-23	SIZE B	PART NO. 2675103002	REV. ~			
CHKD BY		APPRVD BY	SCALE NONE	SHEET 1	of 1		