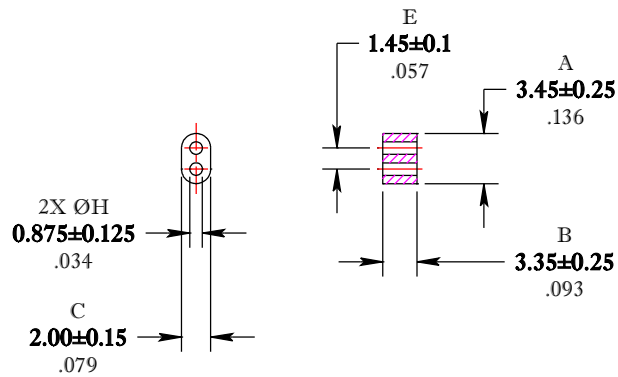


\*\* Not all features are shown in this drawing. For more detailed information, please contact your Fair-Rite representative.

UNCONTROLLED ~CATALOG~ DRAWING

SIZE	PART NO.	REV.
B	2815002302	~



DIMENSIONS  
**BOLD NUMBERS ARE IN MILLIMETERS**  
 LIGHT NUMBERS ARE IN INCHES

**ELECTRICAL SPECIFICATIONS**

IMPEDANCE [Ohms]	
10 MHz	100 MHz
TBD MIN.	TBD MIN.

N=1T-2H, #22 INS, WL=1-1/4"

Lo ~ 0.732 nH/TURN<sup>2</sup>

**NOTES:**

- 1 - BURNISH TO BREAK SHARP EDGES.
- 2 - IMPEDANCE IS MEASURED ON AN HP4193A, USING A 04193-87001 PROBE KIT. IMPEDANCE MAY ALSO BE MEASURED ON AN E4991A OR EQUIVALENT USING A 16092A TEST FIXTURE.

FR# 15

<b>FAIR-RITE PRODUCTS CORP.</b>					
TITLE MULTI-APERTURE CORE					
DRAWN BY D. FOOTE	DATE 11/18/2020	SIZE	PART NO.	REV.	
CHKD BY		B	2815002302	~	
APPRVD BY		SCALE	NONE	SHEET 1 of 1	