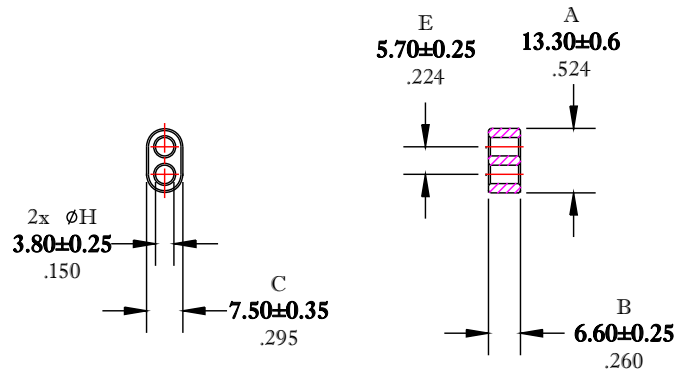


\*\* Not all features are shown in this drawing. For more detailed information, please contact your Fair-Rite representative.

UNCONTROLLED ~CATALOG~ DRAWING

SIZE	PART NO.	REV.
B	2861001502	~




DIMENSIONS  
**BOLD NUMBERS ARE IN MILLIMETERS**  
 LIGHT NUMBERS ARE IN INCHES

ELECTRICAL SPECIFICATIONS			
$A_L$ (nH) @ 10 kHz	$\tan \delta/\mu_i$ @ 1 MHz	$\tan \delta/\mu_i$ @ 10 MHz	Impedance (ohms) @ 250 MHz
145 Min.	$\leq 75 \times 10^{-6}$	$\leq 350 \times 10^{-6}$	90 Min.
N=5T-2H #26 AWG			N=1T-2H #22 AWG, WL=1.25"

NOTES:

1 - BURNISH TO BREAK SHARP EDGES.

FR# 61

 <b>FAIR-RITE PRODUCTS CORP.</b>				
TITLE MULTI-APERTURE CORE				
DRAWN BY D. FOOTE	DATE 7/26/2019	SIZE B	PART NO. 2861001502	REV. ~
CHKD BY				
APPRVD BY		SCALE NONE	SHEET 1 of 1	