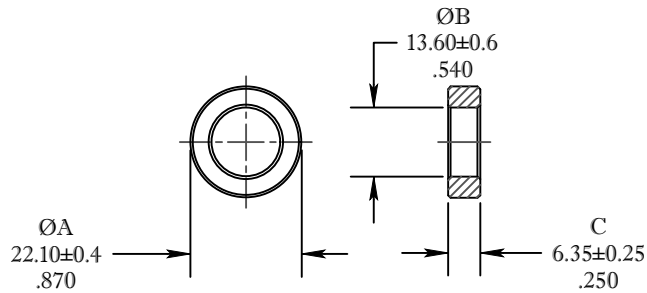


\*\* Not all features are shown in this drawing. For more detailed information, please contact your Fair-Rite representative.

SIZE	PART NO.	REV.
B	5979001801	~

UNCONTROLLED ~CATALOG~ DRAWING



DIMENSIONS  
**BOLD NUMBERS ARE IN MILLIMETERS**  
 LIGHT NUMBERS ARE IN INCHES


ELECTRICAL SPECIFICATIONS						
$\Sigma l/A(\text{mm}^{-1})$	$le$ (mm)	$Ae$ (mm <sup>2</sup> )	$Ve$ (mm <sup>3</sup> )	$Lo$ (nH)	$AL$ (nH) @ 10 kHz <10gauss	$\tan \delta/\mu_1$ @ 500 kHz <1gauss
2.035	53.9	26.5	1428	0.618	863 ± 25%	≤ 15 × 10 <sup>-6</sup>

POWER LOSS @ 100°C  
 f = 500 kHz, 500 gauss, <0.228 Watts

NOTES:

1 - BURNISH TO BREAK SHARP EDGES.

FR# 79

 <b>FAIR-RITE PRODUCTS CORP.</b>						
TITLE TOROID						
DRAWN BY D. FOOTE	DATE 3/20/2019	SIZE B	PART NO. 5979001801	REV. ~		
CHKD BY						
APPRVD BY		SCALE	NONE	SHEET 1 of 1		