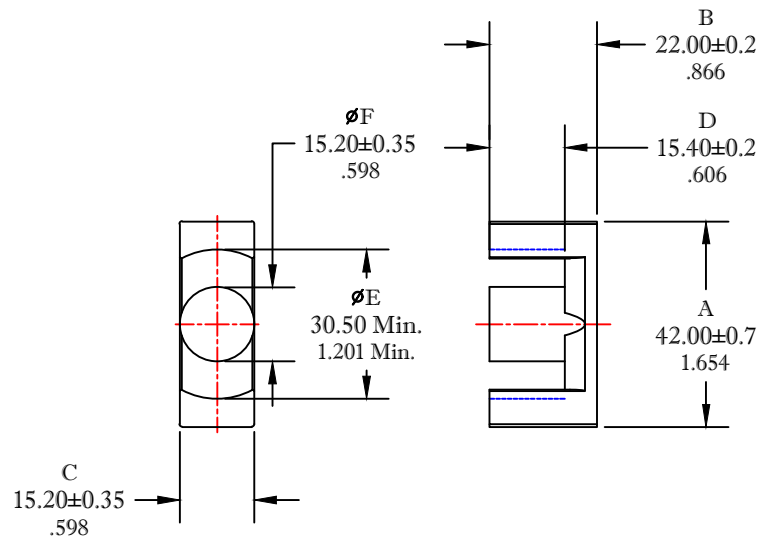


** Not all features are shown in this drawing. For more detailed information, please contact your Fair-Rite representative.

UNCONTROLLED ~CATALOG~ DRAWING

SIZE	PART NO.	REV.
B	9595424402	~



DIMENSIONS
BOLD NUMBERS ARE IN MILLIMETERS
 LIGHT NUMBERS ARE IN INCHES

ELECTRICAL SPECIFICATIONS					
$\Sigma L/A(\text{mm}^{-1})$	l_e (mm)	A_e (mm ²)	V_e (mm ³)	A_{MIN} (mm ²)	A_L (nH) @ 1 kHz <10gauss
0.52	97.9	187	18260	181	5900±25%
MATE PAIR CLAMPING FORCE = 10 LBS.					

POWER LOSS @ 25°C
 F = 100 kHz, 2000g. P.L. < 10.3 WATTS

POWER LOSS @ 100°C
 F = 100 kHz, 2000g. P.L. < 9.2 WATTS

FAIR-RITE PRODUCTS CORP.

TITLE		EER CORE		
DRAWN BY A. BARTLETT	DATE 11-29-2023	SIZE	PART NO.	REV.
CHKD BY		B	9595424402	~
APPRVD BY		SCALE	NONE	SHEET 1 of 1

FR# 95