

Part Number: 6298140121

98 RM CORE SET

RM (Rectangular Modulus) cores allow better shielding than E type geometries while also providing easier winding accessibility and better power dissipation than a pot core configuration. Fair-Rite's standard RM cores all have a solid center post and standard height, low profile and alternate materials are available upon request.

RM cores can be supplied with the center post gapped to a mechanical dimension or an A_L value.

Weight indicated is per pair or set.

Weight: 3.2 (g)

Dim	mm	mm tol	nominal inch	inch misc.
A	14.3	± 0.30	0.563	—
B	5.2	± 0.10	0.205	—
C	6.6	± 0.20	0.26	—
D	3.25	± 0.15	0.128	—
E	10.4	± 0.20	0.409	—
F	4.8	± 0.10	0.189	—
G	6	min	0.237	min
J	12.05	± 0.25	0.474	—

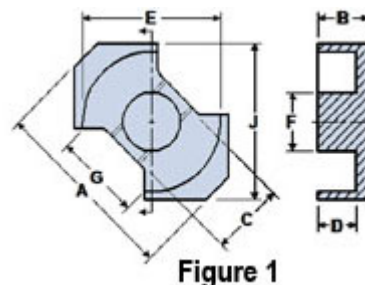



Figure 1

Chart Legend

$\Sigma l/A$: Core Constant, l_e : Effective Path Length, A_e : Effective Cross-Sectional Area, V_e : Effective Core Volume

A_L : Inductance Factor 

Explanation of Part Numbers: Digits 1 & 2 = product class and 3 & 4 = material grade.

Electrical Properties	
A_L (nH)	1770 ±25%
A_e (cm ²)	0.233
$\Sigma l/A$ (cm ⁻¹)	10.3
l_e (cm)	2.39
V_e (cm ³)	0.555

Electrical Properties	
$A_{\min}(\text{cm}^2)$	0.181

A_L value is measured at 1 kHz, $B < 10$ gauss.

Fair-Rite Products Corp. • One Commercial Row, Wallkill, New York 12589-0288
888-324-7748 • 845-895-2055 • Fax: 845-895-2629 • ferrites@fair-rite.com • www.fair-rite.com