

Part Number: 6298370121

98 RM CORE SET

RM (Rectangular Modulus) cores allow better shielding than E type geometries while also providing easier winding accessibility and better power dissipation than a pot core configuration. Fair-Rite's standard RM cores all have a solid center post and standard height, low profile and alternate materials are available upon request.

RM cores can be supplied with the center post gapped to a mechanical dimension or an  $A_L$  value.

Weight indicated is per pair or set.

Weight: 46 (g)

Dim	mm	mm tol	nominal inch	inch misc.
A	36.75	± 0.75	1.447	—
B	12.25	± 0.15	0.482	—
C	15.85	± 0.25	0.624	—
D	8.55	± 0.20	0.337	—
E	25.45	± 0.55	1.002	—
F	12.6	± 0.20	0.496	—
G	13.4	min	0.528	min
J	29.2	± 0.60	1.15	—

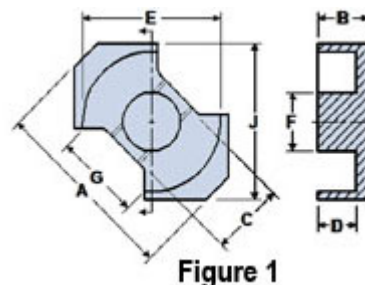



Figure 1

### Chart Legend

$\Sigma l/A$  : Core Constant,  $l_e$  : Effective Path Length,  $A_e$  : Effective Cross-Sectional Area,  $V_e$  : Effective Core Volume

$A_L$  : Inductance Factor 

Explanation of Part Numbers: Digits 1 & 2 = product class and 3 & 4 = material grade.

Electrical Properties	
$A_L$ (nH)	5500 ±25%
$A_e$ (cm <sup>2</sup> )	1.41
$\Sigma l/A$ (cm <sup>-1</sup> )	4.3
$l_e$ (cm)	6.13
$V_e$ (cm <sup>3</sup> )	8.675

Electrical Properties	
$A_{\min}(\text{cm}^2)$	1.247

$A_L$  value is measured at 1 kHz,  $B < 10$  gauss.

Fair-Rite Products Corp. • One Commercial Row, Wallkill, New York 12589-0288  
888-324-7748 • 845-895-2055 • Fax: 845-895-2629 • [ferrites@fair-rite.com](mailto:ferrites@fair-rite.com) • [www.fair-rite.com](http://www.fair-rite.com)