

Part Number: 6295420121

95 RM CORE SET

RM (Rectangular Modulus) cores allow better shielding than E type geometries while also providing easier winding accessibility and better power dissipation than a pot core configuration. Fair-Rite's standard RM cores all have a solid center post and standard height, low profile and alternate materials are available upon request.

RM cores can be supplied with the center post gapped to a mechanical dimension or an A_L value.

Weight indicated is per pair or set.

Weight: 69 (g)

Dim	mm	mm tol	nominal inch	inch misc.
A	41.6	± 0.60	1.638	—
B	15.05	± 0.10	0.593	—
C	18.7	± 0.30	0.736	—
D	10.55	± 0.20	0.415	—
E	29.5	± 0.50	1.161	—
F	14.75	± 0.25	0.581	—
G	17	min	0.670	min
J	34.15	± 0.65	1.344	—

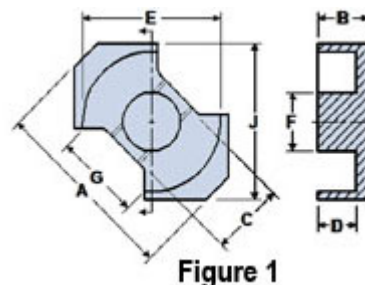



Figure 1

Chart Legend

$\Sigma l/A$: Core Constant, l_e : Effective Path Length, A_e : Effective Cross-Sectional Area, V_e : Effective Core Volume

A_L : Inductance Factor 

Explanation of Part Numbers: Digits 1 & 2 = product class and 3 & 4 = material grade.

Electrical Properties	
A_L (nH)	7500 ±25%
A_e (cm ²)	1.95
$\Sigma l/A$ (cm ⁻¹)	3.8
l_e (cm)	7.38
V_e (cm ³)	14.37

Electrical Properties	
$A_{\min}(\text{cm}^2)$	1.709

A_L value is measured at 1 kHz, $B < 10$ gauss.

Fair-Rite Products Corp. • One Commercial Row, Wallkill, New York 12589-0288
888-324-7748 • 845-895-2055 • Fax: 845-895-2629 • ferrites@fair-rite.com • www.fair-rite.com