

Part Number: 6678272521

78 PQ CORE SET

PQ cores were developed for use in power applications. The large surface area to volume of the core aids in heat dissipation. PQ cores are employed both in filter and transformer designs for switch mode power supplies.

□ PQ cores can be supplied with the centerpost gapped to a mechanical dimension or an A_L value.

Weight indicated is per pair or set.

Weight: 36 (g)

Dim	mm	mm tol	nominal inch	inch misc.
A	26.5	± 0.50	1.043	—
B	12.5	± 0.15	0.492	—
C	19	± 0.40	0.748	—
D	8.05	± 0.15	0.317	—
E	22.5	± 0.40	0.886	—
F	12	± 0.30	0.472	—
G	15.5	min	0.611	min

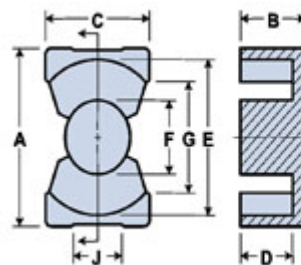


Chart Legend

$\Sigma l/A$: Core Constant, l_e : Effective Path Length, A_e : Effective Cross-Sectional Area, V_e : Effective Core Volume

A_L : Inductance Factor 

Explanation of Part Numbers: Digits 1 & 2 = product class and 3 & 4 = material grade.

Electrical Properties	
A_L (nH)	4670 ±25%
A_e (cm ²)	1.177
$\Sigma l/A$ (cm ⁻¹)	4.59
l_e (cm)	5.4
V_e (cm ³)	6.359
A_{min} (cm ²)	1.131

A_L value is measured at 1 kHz, $B < 10$ gauss.

Fair-Rite Products Corp. • One Commercial Row, Wallkill, New York 12589-0288
888-324-7748 • 845-895-2055 • Fax: 845-895-2629 • ferrites@fair-rite.com • www.fair-rite.com