

Part Number: 6598070121

98 EP CORE SET

EP designs reduce the effect of residual air gap upon the effective permeability of the core, hence they minimize coil volume for a given inductance. EP cores also provide a high degree of isolation from adjacent components and are advantageously used in low power devices, matching and broadband transformers.

□EP cores can be supplied with the center post gapped to a mechanical dimension or an A_L value.

Weight indicates is per pair or set.

Weight: 0.7 (g)

Dim	mm	mm tol	nominal inch	inch misc.
A	9.2	± 0.20	0.362	—
B	3.7	± 0.20	0.146	—
C	6.4	± 0.20	0.252	—
D	2.7	± 0.20	0.106	—
E	7.2	min	0.284	min
F	3.3	± 0.10	0.13	—
K	1.8	min	0.070	—

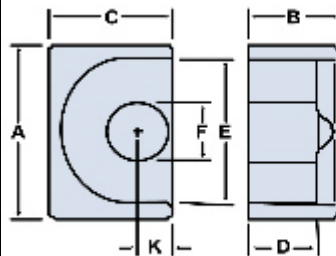


Chart Legend

$\Sigma l/A$: Core Constant, l_e : Effective Path Length, A_e : Effective Cross-Sectional Area, V_e : Effective Core Volume

A_L : Inductance Factor 

Explanation of Part Numbers: Digits 1 & 2 = product class and 3 & 4 = material grade.

Electrical Properties	
A_L (nH)	1020 ±25%
A_e (cm ²)	0.103
$\Sigma l/A$ (cm ⁻¹)	14.4
l_e (cm)	1.48
V_e (cm ³)	0.152

Electrical Properties	
$A_{\min}(\text{cm}^2)$	0.085

A_L value is measured at 1 kHz, $B < 10$ gauss

Fair-Rite Products Corp. • One Commercial Row, Wallkill, New York 12589-0288
888-324-7748 • 845-895-2055 • Fax: 845-895-2629 • ferrites@fair-rite.com • www.fair-rite.com